



# MASONRY VENEER INSTALLATION SYSTEM (MVIS™) Product Selection Catalog



Globally Proven Construction Solutions

Warranty Information/The LATICRETE Advantage..... 3  
 LATICRETE Overview..... 4 – 5

**COMPLETE AIR BARRIER ASSEMBLY**

ABAA Code and Test Results ..... 6 – 7

**AIR AND WATER BARRIER/WATERPROOFING**

MVIS Air & Water Barrier ..... 8  
 Waterproofing/Anti-Fracture Fabric ..... 8  
 LATAPOXY® Waterproof Flashing Mortar..... 9

**MVIS AIR AND WATER BARRIER SYSTEM DETAILS**

MVIS Air and Water Barrier System Details..... 10 – 11  
 Masonry Veneer Installation System (MVIS™) Details ..... 12 – 13

**POLYMER FORTIFIED MASONRY VENEER MORTAR**

**NEW** MVIS LIGHTWEIGHT Mortar ..... 14  
 MVIS Hi-Bond Veneer Mortar..... 15  
 MVIS Hi-Bond Veneer Mortar Rapid..... 15  
 MVIS Veneer Mortar^ ..... 16  
 MVIS Thin Brick Mortar ..... 16

**SPECIALTY MORTAR/THICK BED**

8500 Glass Block Mortar ..... 17  
 MVIS Premium Mortar Bed ..... 17

**EPOXY ADHESIVE**

LATAPOXY 310 Stone Adhesive ..... 18  
 LATAPOXY 310 Cordless Mixer and Nozzles..... 19

**POINTING MORTAR**

MVIS Premium Pointing Mortar ..... 20  
 MVIS Pointing Mortar..... 20  
 MVIS Epoxy Pointing Mortar - Part AB Liquids ..... 21  
 MVIS Epoxy Pointing Mortar - Part C Powders..... 21

**SEALANTS**

LATASIL™ ..... 22  
 LATASIL 9118 Primer ..... 22

**POINTING MORTAR AND SILICONE SEALANT COLORS**

Pointing Mortar and Silicone Sealant Color ..... 23  
 Pointing Mortar and Silicone Sealant Color Guidelines ..... 23

**MVIS FAQs**

Frequently asked questions..... 24 – 27

^ United States Patent No.: 6784229 B2 (and other patents).



# LATICRETE OFFERS THE BEST SYSTEM WARRANTIES IN THE INDUSTRY

## Unmatched Peace of Mind

LATICRETE takes pride in delivering comprehensive system warranty packages and superior service through industry-leading support. With training from our highly experienced technical support team and quick, easy access to supportive online tools, we provide everything you need to ensure high-performance solutions.



LATICRETE 25 YEAR SYSTEM WARRANTY*	
United States and Canada	
See Data Sheet 025.0 for complete warranty information.	
APPLICATION	PRODUCTS
Waterproofing/Anti-Fracture	MVIS™ Air & Water Barrier
Air & Water Barrier System	MVIS Air & Water Barrier LATAPOXY® Waterproof Flashing Mortar
Thick Bed Method	MVIS Premium Mortar Bed
Adhesive Method / Thin Bed Method	MVIS Hi-Bond Veneer Mortar (regular or rapid version) MVIS Veneer Mortar MVIS Thin Brick Mortar
Spot Bonding	LATAPOXY 310 STONE ADHESIVE (REGULAR AND RAPID)
Pointing/Grouting	MVIS Premium Pointing Mortar MVIS Pointing Mortar
Sealant†	LATASIL™ LATASIL 9118

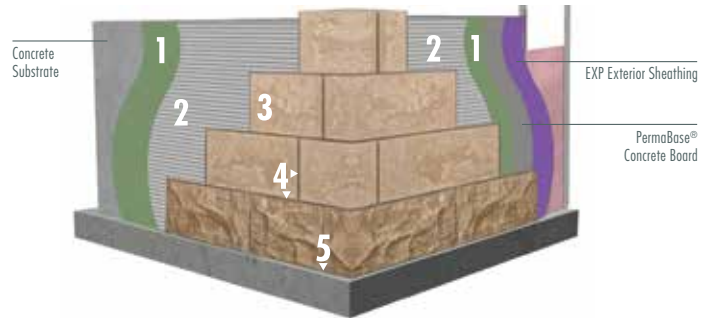
LATICRETE 15 YEAR SYSTEM WARRANTY*	
For Steel or Wood Framed Exterior Facades (United States and Canada)	
See Data Sheet 230.15 for complete warranty information.	
APPLICATION	PRODUCTS
Air & Water Barrier System	MVIS™ Air & Water Barrier LATAPOXY® Waterproof Flashing Mortar
Thick Bed Method	MVIS Premium Mortar Bed
Adhesive Method / Thin Bed Method	MVIS Hi-Bond Veneer Mortar MVIS Veneer Mortar MVIS Thin Brick Mortar
Pointing/Grouting	MVIS Premium Pointing Mortar MVIS Pointing Mortar
Sealant†	LATASIL™ LATASIL 9118 Primer

\* See Data Sheets 025.0 and 230.15 for complete warranty information.

† Use of suitable flexible sealant is required per Tile Council of North America Detail EJ171 for use in expansion joints, caves, corners, changes in plane and other joints or wherever tile or stone abuts dissimilar materials or restraining surfaces.

# THE LATICRETE ADVANTAGE

- 1 MVIS™ Air & Water Barrier
- 2 MVIS Veneer Mortar
- 3 Adhered Veneer
- 4 MVIS Premium Pointing Mortar
- 5 MVIS Silicone Sealant



## The Challenge

The explosive increase in popularity of adhered masonry veneer facades has created a need for higher performance, factory produced installation materials to assure consistently high quality installations.

Up to now, the installation of adhered masonry veneers has required the use of site-mixed Type S or Type N mortars – materials that are subject to large variations in consistency, quality and performance and which also limit the installation technique to that of traditional masonry.

Projects that have been plagued by delaminating stone, water intrusion and other performance issues have left specifiers in need of a coordinated solution. This traditional method is not engineered as part of a complete wall system and therefore does not offer warranties from a reliable source willing to stand behind the installation.

## The Solution

Realizing these needs, and based on our globally proven technology, LATICRETE has developed an installation system that provides a permanent, high strength installation that is freeze/thaw stable and protected from water intrusion.

Backed by either the LATICRETE® 15 Year System Warranty\* or 25 Year System Warranty\*, the Masonry Veneer Installation System (MVIS™) allows for increased productivity utilizing either traditional masonry veneer installation techniques or the “tile setter’s” method.

Architectural details are offered at [www.laticrete.com/MVIS](http://www.laticrete.com/MVIS) to help design professionals, contractors and installers understand the range of possible applications – and appropriate products and techniques which will assure long-term performance on projects of all types.

LATICRETE Proudly Supports the



For over 60 years, LATICRETE has led the industry with pioneering advancements—developing high-performance building materials for architects and construction professionals worldwide. From time-tested to ground-breaking, our broad product portfolio provides superior quality and value. We are fully committed to innovation, growth and a complete system component approach.

## Tile & Stone Installation and Care Systems

Ensure a successful installation each and every time with the most comprehensive assortment of innovative tile and stone installation materials available worldwide. LATICRETE® industry-leading products provide complete system solutions from the substrate up through the grout for virtually any type of tile or stone installation in commercial, industrial and residential applications.

Product categories include surface preparation, waterproofing, sound control, anti-fracture, adhesives, grouts, sealers and cleaners, and shower system components — all designed to work together, providing a comprehensive installation.

CSI Division 9

## Masonry Installation and Care Systems

Keep up with the increasing popularity of adhered masonry veneers. Trust your installations to a complete productivity-boosting system designed to deliver superior, long-term performance on masonry projects of all types including residential, commercial, and industrial applications.

Unlike traditional methods and materials, the Masonry Veneer Installation System (MVIS™) is engineered to provide a permanent, high-strength installation that uses a revolutionary waterproofing membrane to protect against weather and water intrusion, and provide freeze/thaw stability. The MVIS is designed for thin-brick, manufactured stone and natural stone veneers for interior and exterior applications. Complimentary products include paver sand, and sealers and cleaners for stone and pavers.

CSI Divisions 4 & 7

## Concrete Restoration and Care Systems

A quality finished floor starts with a properly prepared surface—one that guarantees a long-lasting, durable installation. LATICRETE time-tested surface preparation products are formulated to preserve quality by protecting installations from water vapor transmission, sound transmission and cracks. They provide a perfectly level and flat substrate to accommodate a variety of floor finishes including vinyl, wood, carpet and tile.

Our innovative products are engineered to ensure substrates will easily accept finishes with minimal time and maximum cost-effectiveness, no matter how challenging your subflooring project may be.

CSI Divisions 3 & 9



## Resinous/Decorative Finishes

Offer unparalleled integral colors, textures, and finishes with high-performance coatings, overlayments, and restoration solutions that give owners exceptionally attractive, durable, decorative floors. SPARTACOTE® decorative finishes allow you to deliver vivid color and gloss with high impact and wear resistance, quick turnaround, and low maintenance.

CSI Divisions 3 & 9



## Concrete Construction Chemicals

Improve the long-term durability, performance and appearance of concrete surfaces with the complete line of L&M™ protection and repair solutions. Curing and sealing treatments, floor hardeners and densifiers, polished concrete systems and stain protection products work together to ensure your concrete floor is safe, resilient, and easy to maintain.

CSI Division 3



## LATICRETE® SUPERCAP® System

The LATICRETE® SUPERCAP® System is a time-saving, cost-effective method for finishing new concrete or capping existing slabs by combining a LEED-contributing, UL GREENGUARD Gold Certified, low-alkali, self-leveling, cement-based technology with a computer-controlled mobile blending unit (pump truck).

This proven lean tool provides benefits right from the start of concrete placement in division 3 and flows through to division 9. With the ability to blend 30,000 pounds per hour and deliver material up to 50 stories high, this revolutionary system benefits the entire project by providing predictable results that save time, money, and improve overall quality.

CSI Division 3



## Industry-Leading Training and Support

### UL GREENGUARD Gold Certification

LATICRETE® low-VOC products are independently certified. Our products help you contribute toward LEED certification.



### LEED Support

The LATICRETE LEED Project Certification Assistant automatically generates required LATICRETE product information for your specific LEED project submittals. Additional LEED information and calculations are available at [laticrete.ecoscorecard.com](http://laticrete.ecoscorecard.com).



### LATICRETE Architectural Guidebook

Use this outstanding online tool to get complete details for project specs and design. You can access it at: [www.laticrete.com/ag](http://www.laticrete.com/ag)

### Training and Education

LATICRETE will hold continuing education seminars right from your office. You can also attend product and installation technology seminars at one of our training centers or a location of your choice.



**ABAA EVALUATED LATICRETE AIR BARRIER ASSEMBLIES**

Air Barrier Association of America (ABAA) is the nationally incorporated, not-for-profit association representing the stakeholders in the building enclosure industry. The ABAA’s mission is to promote the use and benefits of air barrier systems into the future in a progressive and professional manner. ABAA members consist of a large cross section of the industry including manufacturers, suppliers, design professionals, owners, contractors and consultants covering all aspects of the installation system.



LATICRETE Construction Design Details  
 MVIS™ Air & Water Barrier ASTM E 2357  
 Independent Test Results

**AIR BARRIER ASSEMBLY TEST REQUIREMENTS FOR ABAA LISTING**

The ABAA Assembly Evaluation Process requires air barrier manufacturers to provide independent test reports for air barrier materials and assemblies. ASTM E2357 has been adopted as a key element for the evaluation of ABAA criteria. To receive evaluated status, a manufacturer must specify each of the components in the system.

This is a major benefit to the design professional as issues such as compatibility and continuous, supported design are resolved by the manufacturer rather than relying on trial and error methods in the field.

ABAA Evaluated Air Barrier Assemblies are only those materials for which all required wall assembly testing has been submitted and ABAA evaluation has been successfully completed.



PRODUCTS	ABAA AND CODE REQUIREMENT	TEST RESULT	PROPERTY
MVIS™ Air & Water Barrier	Not to exceed 0.2L/(s • m <sup>2</sup> @ 75 PA (0.04 cfm/ft <sup>2</sup> @1.56 psf)	0.0017 L/(s • m <sup>2</sup> ) @ 75 Pa [0.0003 cfm /ft <sup>2</sup> @ 1.57 psf]	Air Leakage of Air Barrier Assembly
MVIS Silicone Sealant	Not to exceed 0.2L/(s • m <sup>2</sup> @ 75 PA (0.04 cfm/ft <sup>2</sup> @1.56 psf)	0.0017 L/(s • m <sup>2</sup> ) @ 75 Pa [0.0003 cfm /ft <sup>2</sup> @ 1.57 psf]	Air Leakage of Air Barrier Assembly

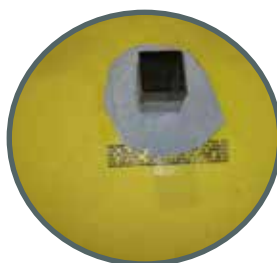
LATICRETE offers a system designed to work with other building components to improve indoor air quality, reduce utility costs and enhance a building's longevity in any climate.

All components work together to provide a seamless, comprehensive system for the building envelope under a wide variety of commercial facades.

**CONTROLLING AIR FLOW**

Air flow carries moisture that impacts materials' long-term performance and structural integrity. In order to design and build safe, healthy, durable, comfortable and economical buildings, airflow must be controlled.

Working together with the building's HVAC system can assist the control of air flow for the life of the building. This system should be every design professional's key strategy in order to develop an effective enclosure design, set achievable performance requirements and verify compliance.



**CODES AND STANDARDS**

Today's building codes are requiring an increase in the energy efficiency of buildings. To meet the challenge, some design professionals are utilizing building envelope systems to seal a building from air infiltration and exfiltration.

Since 2001, many US states have adopted air barrier language into either their local energy code or building codes. The International Building Code (IBC), International Energy Conservation Code (IECC), International Green Construction Code (IgCC), ASHRAE 189.1 and ASHRAE 90.1-10 all have requirements for continuous air barriers.

In order to demonstrate code compliance, LATICRETE successfully completed independent testing in accordance with the following:

**ASTM E 2357**

Standard Test Method for Determining Air Leakage of Air Barrier Assemblies.

**ICC ES AC 212**

ICC ES Acceptance Criteria for Water Resistive Coatings used as Water Resistive Barriers over Exterior Sheathing.

**CAN/ULC S742-11**

Canadian Standard Test Method for Air Barrier Assemblies.





**MVIS™ AIR & WATER BARRIER**

Refer to Data Sheet 661.0  
9257-0005-2  
9257-0401-2



A single component, load bearing, vapor permeable, fluid applied, waterproofing, crack isolation, air barrier membrane. MVIS™ Air & Water Barrier produces a seamless, monolithic elastomeric coating and bonds directly to a wide variety of substrates. A vital component of MVIS designed to enhance building longevity, save energy and increase building occupant comfort. Install Adhered Masonry Veneers (AMV) in 1-2 hours.

**FEATURES/BENEFITS:**

- Industry approved, meets ASTM E2357 Air Leakage of Building Assemblies
- Excellent bond strength, bonds to a variety of substrates
- Helps to prevent air leakage, contributes to overall building energy efficiency
- MVIS™ Air & Water Barrier is an Air Barrier Association of America (ABAA) Evaluated Material and is part of an ABAA Evaluated Assembly

**PACKAGING:**

Commercial Unit: 5 gallon (18.9 L) pail; 36 units per pallet.  
Mini Unit: 4 x 1 gallon (3.8 L) pails packed in a carton (30 cartons/pallet).

Approximate Coverage	
Per Commercial Unit	250 ft <sup>2</sup> (23.2 m <sup>2</sup> )
Per Mini Unit	50 ft <sup>2</sup> (4.6 m <sup>2</sup> )

**WATERPROOFING/  
ANTI-FRACTURE FABRIC**

Refer to Data Sheet 237.0  
S-09235-NF-19



A ready to use thin, flexible, non-woven reinforcement fabric designed for use specifically with MVIS™ Air & Water Barrier to treat sheathing joints in accordance with manufacturer's requirements. Also use Waterproofing/Anti-Fracture Fabric to treat inside, outside corners and rough openings to allow for faster installations.

**FEATURES/BENEFITS:**

- Versatile, can be used on interior, exterior, vertical and horizontal applications
- Tear resistant, provides added strength to installation areas with added stress when used with waterproofing membrane

**PACKAGING:**

75' (23 m) long roll fabric  
6" (15 cm) wide  
20 per carton or 1 each

Approximate Coverage	
	37.5 ft <sup>2</sup> (3.5 m <sup>2</sup> ) per roll





## LATAPOXY® WATERPROOF FLASHING MORTAR

Refer to Data Sheet 070.0  
0024-0001-2



An epoxy-based 3 component, trowel applied, waterproofing and vapor barrier membrane. LATAPOXY® Waterproof Flashing Mortar can be used to waterproof seams, gaps or joints between a variety of substrates and metal and PVC pipe penetrations or flashing. It is specifically designed to be used under adhered masonry veneer, stone or brick for rapid installations which require a fast curing waterproof flashing. LATAPOXY Waterproof Flashing Mortar is flexible, easy to apply and will allow for rapid installations.

### FEATURES/BENEFITS:

- Easy to apply using a trowel
- Adheres to metal and PVC pipes, drains and flashing
- Waterproof seam between flashing and adjacent waterproofing materials

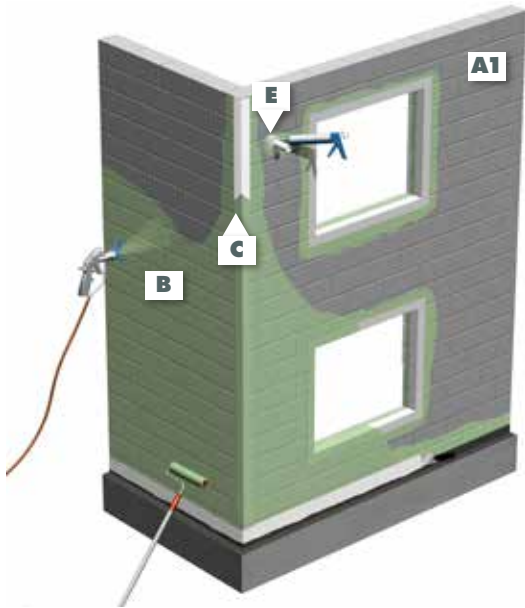
### PACKAGING:

3.5 gallon pail with 2 LATAPOXY® Waterproof Flashing Mortar Part A 1.4 lbs (0.65 kg), 2 LATAPOXY Waterproof Flashing Mortar Part B 1.15 lbs (0.5 kg), and 2 LATAPOXY Waterproof Flashing Mortar Part C 5.5 lbs (2.5 kg); 48 units per pallet

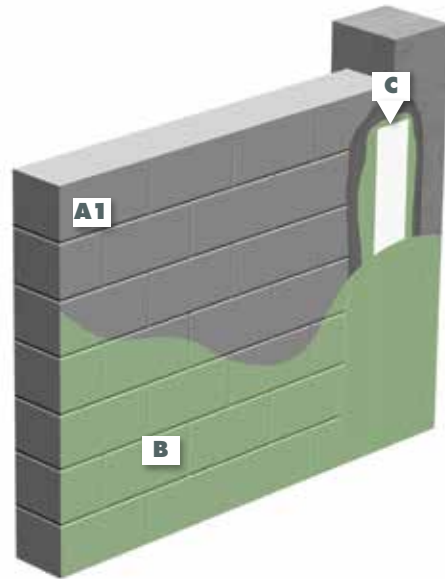
#### Approximate Coverage

45 ft<sup>2</sup>/unit (4.2 m<sup>2</sup>) at 1/8" (3 mm) thick,  
depending on application

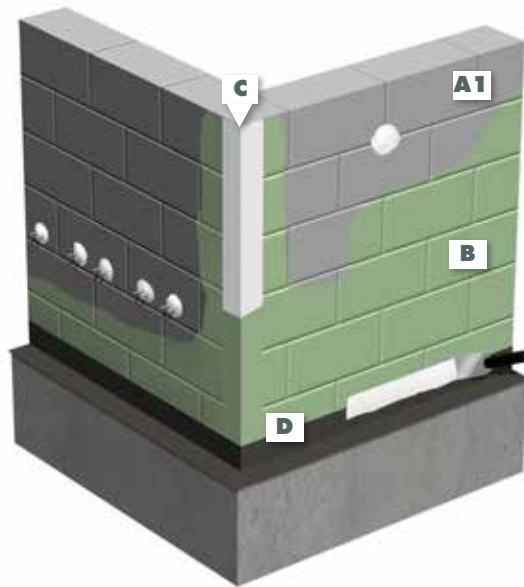




CMU cavity wall with window detail



CMU block wall transition to precast concrete



CMU wall with flashing detail to base slab

**Detail Legend**

**A1** Concrete or CMU Block Wall

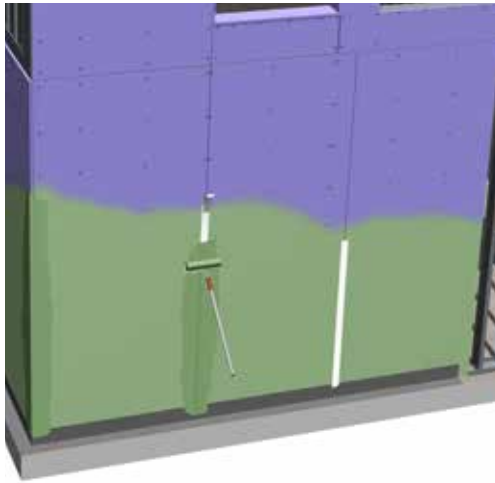
**A2** Framed wall with exterior rated sheathing

**B** MVIS™ Air & Water Barrier

**C** Waterproofing/Anti-Fracture Fabric

**D** LATAPOXY® Waterproof Flashing Mortar

**E** LATASIL™



Framed cavity wall with continuous MVIS™ Air Barrier detail over sheathing



Framed cavity wall with window detail



Joint treatment for MVIS Air Barrier over sheathing

1. Substrates scheduled to receive manufactured stone, natural stone or thin brick must be structurally sound, rigid and conform to good design/engineering practices in accord with all applicable building codes with maximum deflection under all live, dead and impact loads, including concentrated and all anticipated loads of L/600 for all exterior veneer types. Steel and wood frame constructs shall also be designed to meet this criteria. Lateral bracing and edge support for cement backer board panels is required. Install sheathing panels as directed by board manufacturer's installation instructions and building code requirements.

2. MVIS™ Pointing Mortar is designed to meet product applicable project specifications. MVIS Pointing Mortar does not inhibit efflorescence from occurring in natural or manufactured stone facade installations. Efflorescence is a normal condition that may occur when installing portland cement based products. During installation, strike joints in a consistent time frame relevant to application time. MVIS Pointing Mortar should be thumbprint dry before striking. Striking joints too early or too late can create color inconsistencies.

3. MVIS Pointing Mortar color samples are guides only. LATICRETE does not warrant color matching to any color guide produced. Actual shade and texture will depend on

job site conditions, lighting, installation techniques, and types of tile or stone used. Verify actual appearance and compatibility with a test area before installing. Blend colored mortars with different control numbers. No claims for color shade variations will be honored.

4. Please consult LATICRETE Technical Services for more information. 1.800.243.4788, ext. 235, [www.laticrete.com](http://www.laticrete.com), [technicalservices@laticrete.com](mailto:technicalservices@laticrete.com).

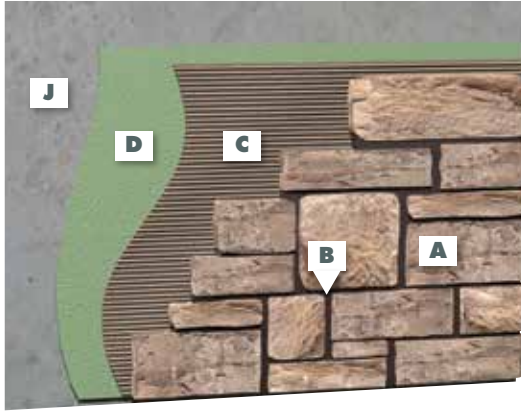
5. For information on pumpable scratch and brown coats, contact LATICRETE Technical Services.

6. For complete application information and limitations consult related Product Data Sheets and Execution Statements related to these details and applicable standards. See Warranty Data Sheet 025.0 for full information and terms.

7. As a professional courtesy, LATICRETE offers technical services free of charge. The user maintains all responsibility for verifying the applicability and suitability of the technical service or information provided.

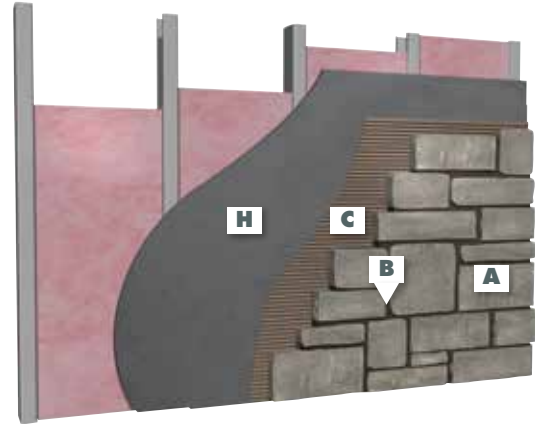
8. Design and placement of weather resistive barriers, vapor retarders and air / water barriers to be detailed by project design professional.

Exterior wall



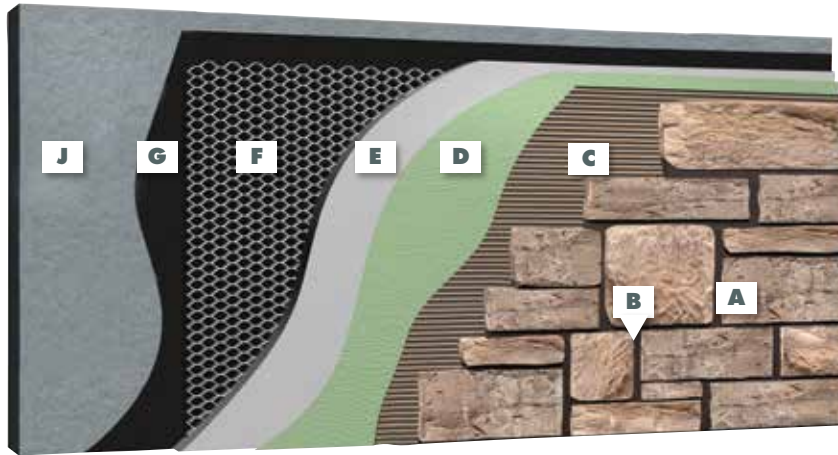
Concrete wall — Direct adhered with fluid applied MVIS™ Air & Water Barrier

Interior wall



Framed wall with cement backer board substrate

Exterior wall



Concrete wall — lath with scratch and brown coat



Scan this QR code to watch the MVIS™ overview video:

[https://youtube/5AqFZP246\\_s](https://youtube/5AqFZP246_s)

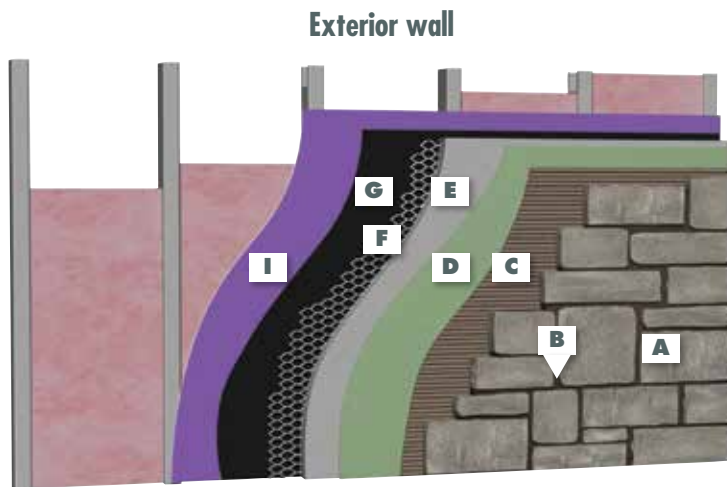
Detail Legend

- A** Adhered Masonry Veneer
- B** MVIS™ Pointing Mortar
- C** MVIS Veneer Mortar <sup>^</sup>
- D** MVIS Air & Water Barrier

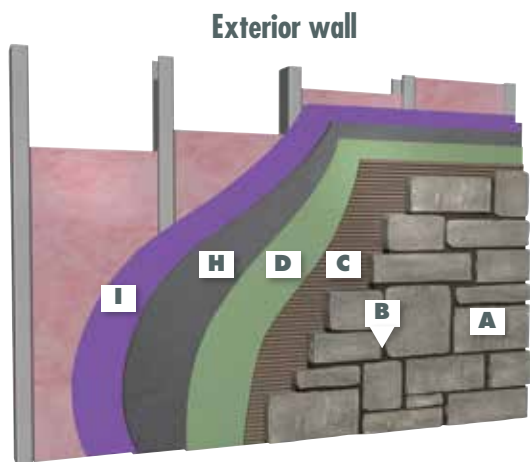
- E** MVIS Premium Mortar Bed
- F** Metal Lath, 3.4# galvanized diamond wire lath
- G** Vapor retarder/cleavage membrane type and location per design professional (e.g. 15 lb builders felt or 4 mil polyethylene sheeting)

- H** Cement backer board (exterior grade)
- I** Exterior rated sheathing
- J** Concrete or masonry

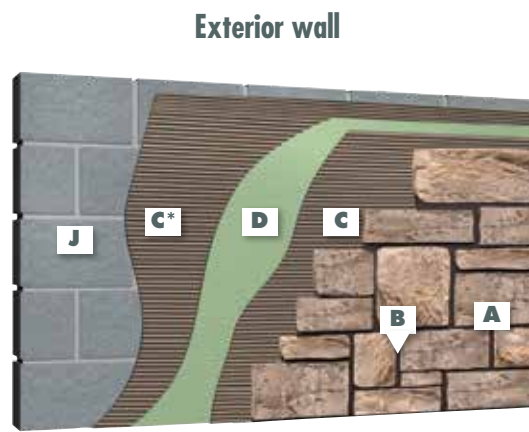
<sup>^</sup> United States Patent No.: 6,784,229 B2 (and other Patents).



Framed wall with exterior rated sheathing – lath with scratch and brown coat



Framed wall with exterior rated sheathing – cement backer board substrate



\*Optional if needed to fill voids in block.

Concrete Masonry Unit (CMU) wall with skim coat – Direct adhered with fluid applied MVIS™ Air & Water Barrier

1. Substrates scheduled to receive manufactured stone, natural stone or thin brick must be structurally sound, rigid and conform to good design/engineering practices in accord with all applicable building codes with maximum deflection under all live, dead and impact loads, including concentrated and all anticipated loads of L/600 for all exterior veneer types. Steel and wood frame constructs shall also be designed to meet this criteria. Lateral bracing and edge support for cement backer board panels is required. Install sheathing panels as directed by board manufacturer's installation instructions and building code requirements.

2. MVIS™ Pointing Mortar is designed to meet product applicable project specifications. MVIS Pointing Mortar does not inhibit efflorescence from occurring in natural or manufactured stone facade installations. Efflorescence is a normal condition that may occur when installing portland cement based products. During installation, strike joints in a consistent time frame relevant to application time. MVIS Pointing Mortar should be thumbprint dry before striking. Striking joints too early or too late can create color inconsistencies.

3. MVIS Pointing Mortar color samples are guides only. LATICRETE does not warrant color matching to any color guide produced. Actual shade and texture will depend on job site

conditions, lighting, installation techniques, and types of tile or stone used. Verify actual appearance and compatibility with a test area before installing. Blend colored mortars with different control numbers. No claims for color shade variations will be honored.

4. Please consult LATICRETE Technical Services for more information. 1.800.243.4788, ext. 235, www.laticrete.com, technicalservices@laticrete.com.

5. For information on pumpable scratch and brown coats, contact LATICRETE Technical Services.

6. For complete application information and limitations consult related Product Data Sheets and Execution Statements related to these details and applicable standards. See Warranty Data Sheet 025.0 for full information and terms.

7. As a professional courtesy, LATICRETE offers technical services free of charge. The user maintains all responsibility for verifying the applicability and suitability of the technical service or information provided.

8. Design and placement of weather resistive barriers, vapor retarders and air/water barriers to be detailed by project design professional.



**MVIS™ LIGHTWEIGHT MORTAR**

Refer to Data Sheet 060.1  
9369-0030-22



MVIS™ LIGHTWEIGHT Mortar is a lightweight, high performance multi-use, polymer fortified adhesive mortar. MVIS LIGHTWEIGHT Mortar offers tremendous utility including non-sag wall installations.

**FEATURES/BENEFITS:**

- Incredible non-sag performance, including large and/or heavy thin brick, stone, masonry veneer, or tile
- Lightweight formula. A 30 lb (13.6 kg) bag provides the same coverage as a 50 lb (22.7 kg) bag of traditional mortar
- Exceeds ANSI A118.4, 118.11 & 118.15 Requirements
- Bonds to many suitable substrates
- Unique color options are now available in all LATICRETE® grout colors when mixed with PERMACOLOR® Select^ Color Kits\*

**PACKAGING:**

30 lb (13.6 kg) bag; 56 bags per pallet; White

**Approximate Coverage** Per 30 lb (13.6 kg) bag

NOTCHED TROWEL	COVERAGE
1/4" x 3/8" (6 mm x 9 mm)	60 - 70 ft <sup>2</sup> (5.6 - 6.5 m <sup>2</sup> )
1/2" x 1/2" (12 mm x 12 mm)	40 - 47 ft <sup>2</sup> (3.7 - 4.4 m <sup>2</sup> )
Adhered Masonry Veneer Application Method	30 - 35 ft <sup>2</sup> (2.8 - 3.2 m <sup>2</sup> )

^ United States Patent No.: 6784229 (and other Patents)

\* LATICRETE makes no guarantee on color match to our grout color card and color tools. This process/method can be used to create a colored adhesive mortar to facilitate the installation of translucent, transparent, opaque glass mosaics and other finishes where cleaning thin set mortar out of the joints is a challenge. Do not use colored adhesive mortar as a substitute for grout. Always conduct a test area to validate performance and results.



**MVIS™ HI-BOND VENEER MORTAR**

Refer to Data Sheet 246.0  
9354-0050-21



The ultimate, polymer fortified, adhesive mortar for interior and exterior installation of large format adhered masonry veneer, stone, ceramic tile, pavers or thin brick. MVIS™ Hi-Bond Veneer Mortar mixes easily with water and is formulated to achieve unsurpassed workability and adhesion.

**FEATURES/BENEFITS:**

- Exceeds ANSI A118.4 and ANSI A118.15
- Ultimate adhesion for masonry veneers
- Exterior and interior use

**PACKAGING:**

50 lb (22.7 kg) bag; 56 bags per pallet; Grey

**MVIS HI-BOND VENEER MORTAR RAPID**

Refer to Data Sheet 247.0  
9354-0025-21-1



The ultimate, fast setting, polymer fortified, adhesive mortar for interior and exterior installation of adhered masonry veneer stone thin brick or pavers. MVIS Hi-Bond Veneer Mortar Rapid mixes easily with water and is formulated to achieve unsurpassed workability and adhesion in 2 – 4 hours.

**FEATURES/BENEFITS:**

- Fast setting; point or grout in 2 – 4 hours
- Ultimate adhesion for masonry veneers
- Exceeds ANSI A118.4 and ASTM C270 requirements

**PACKAGING:**

25 lb (11.3 kg) bag; 104 bags per pallet; Grey



Approximate Coverage Per 50 lb (22.7 kg) bag	
NOTCHED TROWEL	COVERAGE
1/4" x 3/8" (6 mm x 9 mm)	60 - 70 ft <sup>2</sup> (5.6 - 6.5 m <sup>2</sup> )
1/2" x 1/2" (12 mm x 12 mm)	40 - 45 ft <sup>2</sup> (3.7 - 4.2 m <sup>2</sup> )
Adhered Masonry Veneer Application Method	30 - 33 ft <sup>2</sup> (2.8 - 3.1 m <sup>2</sup> )

Approximate Coverage Per 25 lb (11.3 kg) bag	
NOTCHED TROWEL	COVERAGE
1/4" x 3/8" (6 mm x 9 mm)	25 - 30 ft <sup>2</sup> (2.3 - 2.8 m <sup>2</sup> )
1/2" x 1/2" (12 mm x 12 mm)	20 - 23 ft <sup>2</sup> (1.9 - 2.1 m <sup>2</sup> )
Adhered Masonry Veneer Application Method	15 - 17 ft <sup>2</sup> (1.4 - 1.6 m <sup>2</sup> )





**MVIS™ VENEER MORTAR<sup>^</sup>**

Refer to Data Sheet 060.0  
0261-0040-21



A patented, versatile polymer fortified adhesive mortar designed specifically for the installation of adhered masonry veneer, stone and thin brick. MVIS™ Veneer Mortar is a high performance mix that provides maximum, non-sag performance for vertical installations and also obtains maximum bond strength to the substrate and selected veneers. Reinforced with Kevlar®<sup>^</sup> for added strength, MVIS Veneer Mortar offers exceptional workability.

**FEATURES/BENEFITS:**

- Incredible non-sag performance — faster easier installations
- Provides maximum bond strength to substrate and veneer
- Exceeds ASTM C270 and ASTM C482 strength requirements
- Mixes only with water

**PACKAGING:**

40 lb (18.2 kg) bag; 56 bags per pallet; Grey

Approximate Coverage Per 40 lb (18 kg) bag	
VERTICAL APPLICATIONS	
NOTCHED TROWEL	COVERAGE
1/4" x 3/8" (6 mm x 9 mm)	55 - 65 ft <sup>2</sup> (5.1 - 6.0 m <sup>2</sup> )
1/2" x 1/2" (12 mm x 12 mm)	42 - 50 ft <sup>2</sup> (3.9 - 4.6 m <sup>2</sup> )
Adhered Masonry Veneer Application Method	28 - 33 ft <sup>2</sup> (2.6 - 3.1 m <sup>2</sup> )

**MVIS THIN BRICK MORTAR**

Refer to Data Sheet 248.0  
9359-0050-21



A multi-use, polymer fortified adhesive mortar, MVIS Thin Brick Mortar is built on the LATICRETE® Water Dispersion Technology (WDT™) platform. WDT provides for the complete dispersion of water within the mix allowing users to achieve the desired application consistency. MVIS Thin Brick Mortar offers tremendous utility including non-sag wall installations, medium bed build up of up to 3/4" (19 mm) and thin-set applications on floors. In addition, MVIS Thin Brick Mortar is manufactured using DUST LOCK™ Technology.

This unique way of manufacturing our adhesives incorporated with LATICRETE plastic packaging dramatically reduces mess both during transportation of the product as well as during mixing.

**FEATURES/BENEFITS:**

- Thin and large and heavy veneer applications
- Exceeds ANSI A118.4, A118.11 and A118.15
- Exceeds ASTM C270 requirements

**PACKAGING:**

50 lb (22.7 kg) bag; 56 bags per pallet; Grey

Approximate Coverage Per 50 lb (22.7 kg) bag	
NOTCHED TROWEL	COVERAGE
1/4" x 3/8" (6 mm x 9 mm)	60 - 70 ft <sup>2</sup> (5.6 - 6.5 m <sup>2</sup> )
1/2" x 1/2" (12 mm x 12 mm)	40 - 47 ft <sup>2</sup> (3.7 - 4.4 m <sup>2</sup> )
Adhered Masonry Veneer Application Method	30 - 35 ft <sup>2</sup> (2.8 - 3.2 m <sup>2</sup> )



<sup>^</sup> United States Patent No.: 6784229 B2 (and other patents).



**8500 GLASS BLOCK MORTAR**

Refer to Data Sheet 291.0  
8500-0050-22



8500 Glass Block Mortar is a high-strength, factory-prepared mortar for installing glass block. Economical and easy to use, 8500 Glass Block Mortar is recommended for interior and exterior use. It eliminates job site blending and provides a factory controlled mix for high-performance.

**FEATURES/BENEFITS:**

- High strength, permanent bond
- Frost proof, shock and weather resistant
- Smoother finish joints

**PACKAGING:**

50 lb (22.7 kg) bag; 56 bags per pallet

Approximate Coverage Per 50 lb (22.7 kg) bag	
Per 100 ft <sup>2</sup> (9 m <sup>2</sup> ) (3-7/8" [10 cm] wide nominal block)	Number of Bags (based on 1/4" [6 mm] mortar joint)
Square 6" (15 cm) block	14 bags
Square 8" (20 cm) block	10.5 bags
Square 12" (30 cm) block	7 bags

**MVIS™ PREMIUM MORTAR BED**

Refer to Data Sheet 263.0  
9329-0060-21



A polymer fortified blend of carefully selected raw materials, portland cement and graded aggregates. MVIS™ Premium Mortar Bed does not require the use of latex admixtures. Just add water to produce thick bed mortar with exceptional strength. MVIS Premium Mortar Bed is ideal as the brown coat over wire lath. May be used to level walls and may also be used for sloping horizontal applications.

**FEATURES/BENEFITS:**

- Polymer fortified – no need for job site mixing of latex additives
- Economical – saves time and money
- High strength formula
- Exceeds ASTM C270 compressive strength requirements
- Use as a scratch or finish coat in place of Type S or Type N mortar
- Premixed – no job site blending of powders required
- Pumpable for large scale veneer projects

**PACKAGING:**

60 lb (27.3 kg) bag; 56 bags per pallet

Approximate Coverage Per 60 lb (27.2 kg) bag	
12 ft <sup>2</sup> at 1/2" (1.1 m <sup>2</sup> at 12 mm)	
6 ft <sup>2</sup> at 1" thickness (0.56 m <sup>2</sup> at 25 mm)	
3 ft <sup>2</sup> at 2" (0.3 m <sup>2</sup> at 50 mm)	



## LATAPOXY® 310 STONE ADHESIVE

Refer to Data Sheets 679.0 and 679.3  
S-310AB-NC-08 S-310AB-NC-08-1 S-310AB-NC-10  
S-310AB-NC-10-1 S-310AB-CC-10 S-310AB-CC-10-1



A strong, two-component epoxy adhesive for spot-bonding large format tile and stone on vertical surfaces. Easier and faster than traditional methods of veneer installation.

### FEATURES/BENEFITS:

- For interior or approved exterior applications
- Comes in both standard and rapid version for faster curing
- No drilling, cutting kerfs, or setting pins
- Allows for quick plumb adjustment while stone is in place to compensate for uneven walls and stone thickness variations
- Won't fail or deteriorate over time
- ANSI A118.3 and ISO 13007-1 R2T classification

### PACKAGING:

**Kit:** 2.6 gallon (9.8 L): All components packed in one carton; 40 cartons per pallet. Available in standard and rapid versions. 2 gallon (7.6 L): 8 x 1.06 quart (8 x L) units packed in one carton; 40 cartons per pallet. Available in standard and rapid versions.

**Cartridges:** 2.3 gallons (8.7 L) Cartridge Pack (for use in LATAPOXY 310 Cordless Mixer): 15 x 0.16 gallon (0.6 L) cartridges per carton, 27 cartons per pallet. Available in standard and rapid versions.

**LATAPOXY 310 CORDLESS MIXER AND NOZZLES**

Refer to Data Sheet 683.0  
RT8480310 RT8480500



This dual-component mixer quickly dispenses LATAPOXY 310 Stone Adhesive onto tile, porcelain, and stone veneers.

**FEATURES/BENEFITS:**

- Triples productivity of vertical stone and tile installations
- Install hundreds of square feet per day
- Design and gear system allow speed and dosing control
- No mixing—just insert the dual component cartridge, screw on the mixing nozzle, and pull the trigger!

**PACKAGING:**

1 LATAPOXY 310 Cordless Mixer per carton;  
24 cartons per pallet

Approximate Coverage		
Average Inches (or millimeters) Out of Plumb	LATAPOXY® 310 Stone Adhesive Thickness	Approximate Coverage/10 Liter Units
Plumb Wall 1/8" (3 mm)	1/8" thick (3 mm)	300 - 325 ft <sup>2</sup> (27 - 30 m <sup>2</sup> )
1/4" (6 mm)	1/4" thick (6 mm)	150 - 170 ft <sup>2</sup> (14 - 16 m <sup>2</sup> )
1/2" (12 mm)	1/2" thick (12 mm)	75 - 80 ft <sup>2</sup> (7 - 7.5 m <sup>2</sup> )



**MVIS™ PREMIUM POINTING MORTAR**

Refer to Data Sheet 274.0  
28XX-0025-2



A factory prepared, high-strength, fast setting, high-performance mortar system, MVIS™ Premium Pointing Mortar is designed for pointing joints in new and existing masonry veneer installations. MVIS Premium Pointing Mortar is color consistent. Ideal for floors and walls (joint widths of 1/4" - 1/2" [6 - 12 mm]). Mix only with water.

**FEATURES/BENEFITS:**

- Provides a durable, hard joint
- For joint widths of 1/4" - 1/2" (6 mm - 12 mm)
- Exterior and interior use

**COLORS:**

See the Pointing Mortar Color Chart on page 23 for a list of available colors.

**PACKAGING:**

25 lb (11.3 kg) bag; 104 bags per pallet

**MVIS POINTING MORTAR**

Refer to Data Sheet 228.0  
04XX-0050-2



A factory prepared, high performance mortar system, MVIS Pointing Mortar is designed to be mixed with water. Formulated from a blend of high strength portland cement, graded aggregates, and color-fast pigments. Provides a joint that is dense, hard and durable.

**FEATURES/BENEFITS:**

- Provides a durable, hard joint
- For joint widths of 3/16" (5 mm) up to 1-1/4" (32 mm)
- Exterior and interior use

**COLORS:**

See the Pointing Mortar Color Chart on page 23 for a list of available colors.

**PACKAGING:**

50 lb (22.7 kg) bag; 56 bags per pallet

**Approximate Coverage**

350 - 380 linear ft (107 - 116 linear m) with 3/8" wide by 1/4" (9 mm x 6 mm) deep joint

**Nominal Thickness / Approximate Coverage**

700 - 750 linear ft (213 - 229 linear m) with 3/8" wide by 1/4" (9 mm x 6 mm) deep joint



**MVIS™ EPOXY POINTING MORTAR - PART AB LIQUIDS**

Refer to Data Sheet 273.0  
S-228P4-NS-03



A three component, high performance epoxy based pointing mortar system, MVIS™ Epoxy Pointing Mortar provides superior joint durability and stain resistance. The non-sag formula mixes and installs with ease.

**FEATURES/BENEFITS:**

- Structural glazed facing tile (SGFT) glazed concrete block and glazed clay tile
- Residential and commercial
- Interior use only
- Vertical and overhead applications
- Wet areas
- Easy to maintain – cleanable to the original color
- 80 minutes working time at 70°F (21°C)
- Tough, durable and crack resistant

**PACKAGING:**

MVIS Epoxy Pointing Mortar Part A: 4 x 1.3 lb (0.6 kg),  
MVIS Epoxy Pointing Mortar Part B: 4 x 1.3 lb (0.6 kg),  
gloves, sponge, and cleaning packets packed in one carton;  
44 cartons per pallet.

Note: MVIS™ Epoxy Pointing Mortar Part C Powder required and sold separately.

**Approximate Coverage** Standard unit for pointing joint

600 - 650 linear ft (183 - 198 linear m) of  
3/8" wide x 1/4" deep joint (9 mm x 6 mm)

**MVIS EPOXY POINTING MORTAR - PART C POWDERS**

Refer to Data Sheet 273.0  
13XX-0409-2



MVIS Epoxy Pointing Mortar is a high performance epoxy pointing mortar that offers excellent color uniformity, durability, stain resistance and sanitary full joints in an easy-to-use, non-sag formula. Available in 9 colors and designed to be used with MVIS Epoxy Pointing Mortar AB liquids.

**COLORS:**

See the Pointing Mortar Color Chart on page 23 for a list of available colors. Custom colors also available.

**PACKAGING:**

9 lb (4.1 kg) container  
4 containers per carton; 44 cartons per pallet

Note: MVIS Epoxy Pointing Mortar Part AB Liquids required and sold separately.





**LATASIL™**

Refer to Data Sheet 6200.1  
62XX



A 100% silicone sealant for use in coves, corners, changes in plane, and expansion joints in exterior and interior applications of tile and stone. LATASIL™ silicone sealant is now available in 40 colors, plus clear.

**FEATURES/BENEFITS:**

- Can be used in swimming pools and other wet areas
- Conforms to ASTM C920 and ASTM C794 adhesion properties

**COLORS:**

See Grout and Sealant Color Chart on page 23 for a list of available colors.

**PACKAGING:**

10.3 oz (305 ml) cartridges; 6 cartridges per carton; 240 cartons per pallet

5 gallon (18.9 L) pail; 24 units per pallet. Contact your distributor for details.

Approximate Coverage <small>Per cartridge</small>	
THICKNESS	COVERAGE
1/4" x 1/4" (6 mm x 6 mm)	25 linear feet (7.62 m)
3/8" x 3/8" (9 mm x 9 mm)	11 linear feet (3.35 m)



**LATASIL 9118 PRIMER**

Refer to Data Sheet 6528.1  
9118-0601-2



A single component, primer adhesive designed to increase the adhesion of porous stone or permanently wet/underwater applications.

**FEATURES/BENEFITS:**

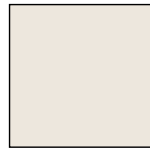
- Ultimate bond for decorative wear surfaces
- Easily roller applied
- Provides a barrier between decorative wear surfaces and substrate below

**PACKAGING:**

8 oz (240 ml) bottle; 5 bottles per carton; 50 cartons per pallet



**POINTING MORTAR AND SILICONE SEALANT COLORS**



**44 Bright White**  
△ ○



**39 Mushroom**  
△ ○



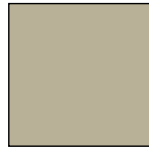
**40 Latte**  
△ ○



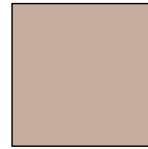
**66 Chestnut Brown**  
△ ○



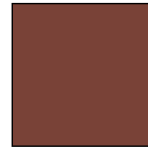
**45 Raven**  
△ ○



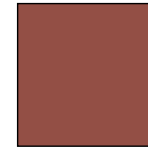
**24 Natural Grey**  
△ ○



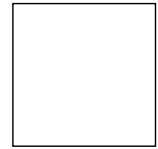
**38 River Rock**  
△ ○



**58 Terra Cotta**  
△ ○



**46 Quarry Red**  
△ ○



**00 Clear**  
○

**COLOR KEY (AVAILABILITY)**

- △ MVIS™ Premium Pointing Mortar
- △ MVIS Pointing Mortar
- △ MVIS Epoxy Pointing Mortar
- LATASIL™ comes in 40 colors.

**POINTING MORTAR AND SILICONE SEALANT COLOR GUIDELINES**

All pointing mortar and sealant samples are guides only. LATICRETE does not warrant color matching to this color chart or to any color guide produced. Actual shade and texture will depend on job site conditions, lighting, installation techniques and types of adhered veneer used, and may vary from any color charts, color channel kits and color swatches on product packaging. Verify actual appearance and compatibility with a test area before installing. Blend pointing mortar with different control numbers. No claims for color shade variations will be honored.

Note: Color availability of all Pointing Mortars are subject to change



## FREQUENTLY ASKED QUESTIONS

### 1. What is MVIS™?

MVIS™ (Masonry Veneer Installation System) was designed to create a better way to install thin adhered masonry veneer. With almost 60 years of setting industry standards with waterproofing and polymer fortified adhesive cement technology, LATICRETE offers an installation system that provides a permanent solution to adhering natural, manufactured stone, thin brick and other products to vertical and horizontal substrates.

MVIS when used in accordance with written instructions, provides the owner with a warranted solution for the installation of thin brick, manufactured stone, natural stone, and other thin veneer products.

### 2. What's wrong with the methods traditionally used to install thin adhered veneers?

While there have been many examples of success using the traditional masonry method of installation, the materials used — felt paper, metal lath and scratch coats made of Type S/N masonry mortars are not engineered as part of a complete wall system. Some limitations of this method include:

- Limited installation warranties
- Absence of third party testing to substantiate performance levels
- Water resistant barriers are compromised causing water intrusion into the system
- Low bond strength adhesion values of traditional mortars result in delamination
- Lack of freeze/thaw durability
- Field mixed products lead to inconsistencies in mix ratios
- Field labor inconsistencies lead to variable substrate quality
- Substrate is seldom properly wet cured as stipulated prescriptively in the model building codes, resulting in shrinking and cracking

### 3. What advantages does the MVIS offer?

- 15 year labor and materials warranty over exterior steel or wood framed construction
- 25 year labor and materials warranty over exterior masonry and concrete, and interior wood and steel framed construction
- Superior adhesive mortars with six to ten times the bond strength of traditional mortars
- Fully monolithic and load-bearing waterproof membrane
- Faster and more economical system using factory blended and bagged, ready to use products
- Mortars provide non-sag — easily adjustable qualities producing easier installation



Example of Traditional System



Water Intrusion



Delamination of Stone



Adhesion Failures



\* See Data Sheets 230.15 and 025.0 for complete warranty information.



**4. Is MVIS™ more expensive than traditional systems?**

No. While MVIS™ individual components typically cost more per sku than traditional counterparts, the systems are not comparable in terms of total installation cost. In most cases, the installed cost is actually less with the MVIS.

- Installation of cement backer board is faster and less expensive than a lath with scratch and brown coat method, saving both labor and material costs
- Traditional systems often use much more product due to waste and inconsistent jobsite mixing
- MVIS™ mortars offer faster installation of adhered veneer stones and thin bricks
- The cost associated with non-warranted traditional products is often not calculated; LATICRETE offers a fully warranted system including the cost of materials and labor

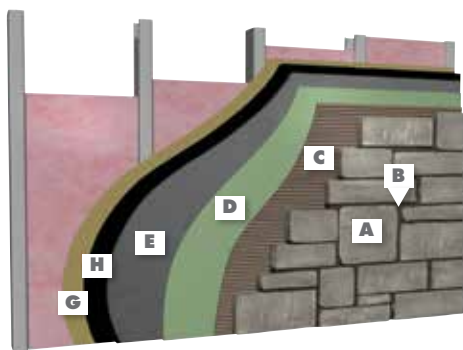
**5. Can anyone install the MVIS?**

Yes. MVIS can be installed by any trade. This includes, but is not limited to:

- Brick and stone masons
- Tile installers

Any of these installers can offer the appropriate LATICRETE Warranty.

**Exterior Wall – MVIS™ Installation**

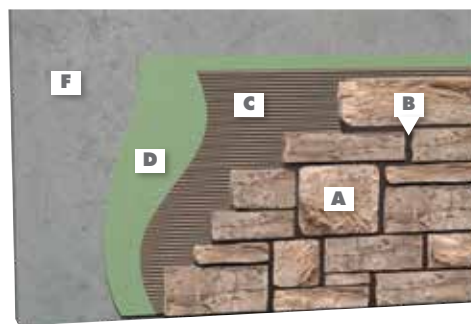


Framed wall with exterior rated sheathing —  
Cement backer board substrate



Add lath and Premium Mortar Bed design option for 15 year warranty.

**Exterior Wall – MVIS Installation**



Concrete or concrete block wall  
— direct adhered with fluid applied air and water barrier/  
waterproofing



**Detail Legend**

- |  |                                   |  |
|--|-----------------------------------|--|
| <b>A</b> Thin adhered veneer             | <b>D</b> MVIS Air & Water Barrier | <b>G</b> Exterior rated sheathing                |
| <b>B</b> MVIS™ Pointing Mortar           | <b>E</b> Cement backer board      | <b>H</b> Two layers of weather resistive barrier |
| <b>C</b> MVIS Veneer Mortar <sup>^</sup> | <b>F</b> Concrete or masonry      |  |

<sup>^</sup>United States Patent No. 6,881,768 (and other Patents)

## 6. What MVIS™ adhesive mortar should I choose for my project?

The MVIS™ product line features four adhesive mortar options, designed specifically for the type of adhered veneer to be installed.

- MVIS Veneer Mortar<sup>^</sup>

Patented, versatile polymer fortified mortar designed for the installation of adhered masonry veneers, stone and thin brick featuring superior non-sag capabilities and adjustability

- MVIS Hi-Bond Veneer Mortar

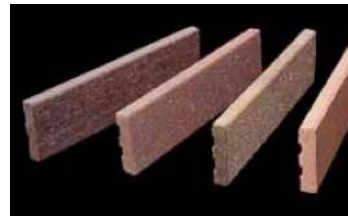
The ultimate, polymer fortified, adhesive mortar designed for heavier natural stones or veneers

- MVIS Hi-Bond Veneer Mortar Rapid

The ultimate, fast setting, polymer fortified, adhesive mortar formulated for faster time to service

- MVIS Thin Brick Mortar

An economical, multi-use, polymer fortified mortar producing maximum coverage for thin brick installations



## 7. How do I qualify for the warranty on my project?

LATICRETE does not offer certification for installers. Rather, in order to qualify for the MVIS warranty, the installer must follow the instructions for a complete system. Components of a complete warranted system include, but are not limited to:

- Proper installation and joint preparation of the substrate, including cement backer board over exterior sheathing for framed construction
- Proper flashing of required areas including penetrations
- 100% coverage using MVIS mortars as per code for exterior veneer
- Use of all MVIS products as stated in warranty document

## 8. Where can I purchase MVIS products?

MVIS products are sold through contractor supply channels of distribution around the country.

See [http://www.laticrete.com/mvis/find\\_a\\_distributor.aspx](http://www.laticrete.com/mvis/find_a_distributor.aspx) for a distributor near you.

Please contact your local MVIS representative for additional information.

<sup>^</sup>United States Patent No. 6,881,768 (and other Patents)

9. Which thin veneer manufacturers recommend or require MVIS™?

LATICRETE has many partners that recommend and support MVIS™ for installation of their products. MVIS Partners value and understand project success is dependent upon quality veneers, installation materials and methods.



10. What architectural resources are available for specifying and recommending MVIS?

LATICRETE offers full and short form architectural specification guidelines plus a full detail library. The specifications and details outline recommended installation procedures (flashing and tie-ins) for many common jobs. Please contact your local distributor or an MVIS representative for additional information.

Many LATICRETE Partners also offer installation guidelines specific to their products.

11. What other resources are available?

Full website for MVIS: [www.laticrete.com/mvis](http://www.laticrete.com/mvis)

MVIS video: [http://youtu.be/5AqFZP246\\_s](http://youtu.be/5AqFZP246_s)

Warranty information: [http://www.laticrete.com/mvis/warranty\\_information.aspx](http://www.laticrete.com/mvis/warranty_information.aspx)



Scan for more information.



LATICRETE International, Inc. ■ One LATICRETE Park North, Bethany, CT 06524-3423 USA ■ 1.800.243.4788 ■ +1.203.393.0010 ■ [www.laticrete.com](http://www.laticrete.com)

DS-005.2-0917 ©2017 LATICRETE International, Inc. All trademarks shown are the intellectual properties of their respective owners.